

Powerful, Entry-Level Line Printer

T6050



Line Printer Reliability at an entry-level price

The T6050 line impact dot matrix printer from Tally combines the speed and power of line printing with the flexibility of a desktop dot matrix printer.

Printing at 500 lines per minute, the T6050 is the most reliable and economical solution for high volume printing of long-run data processing printouts, management reports, mailings or forms processing.

Stored-energy hammer bank technology in the T6050 provides consistent print quality, whether printing single-part or six-part forms, while using less electrical energy than other line impact technologies.

Excellent Features

- 500 lines per minute; unlimited duty cycle
- Mission critical durability
- Available in Tabletop, Enclosed Pedestal and Quick Access versions

Outstanding Forms Handling

- Straight paper path; up to 6-part forms
- Paper motion and paper out detection

Consistent Print Quality

- Quick-change, clean-hands, long-life ribbon cartridges
- Stored-energy hammer bank technology

Exceptional Connectivity

- Twinax, Coax, Ethernet, IPDS and IPDS over TCP/IP

Superior Compatibility

- Wide range of standard emulations for legacy systems/PC/LAN compatible
- QMS[®] Code V[™] and Printronix[®] Graphics Language (PGL) compatibility for industrial graphics and bar codes

Monochrome Laser
Line Matrix **Computer Printers**
Color Laser Ink Jet
Serial Dot Matrix

Tally[®]
Computer Printers

Powerful, Entry-Level Line Printer

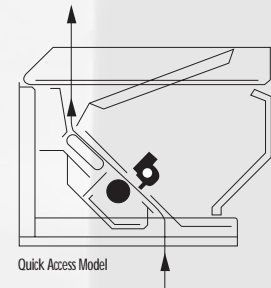
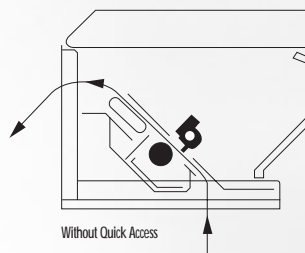
Features & Specifications	T6050
Print Technology	Line impact dot matrix
Print Speed	Text: 500 lines per minute, draft: 375 lines per minute, data processing: graphics: 50 inches per minute
Workload	144,000 pages per month
Acoustic Level	55 dB(A)
Character Printing Modes	Constant density fonts; enhanced fonts
Character Sets	27 unique character sets with 35 language substitutions
Characters Per Inch	5, 6*, 6.7*, 7.5*, 8.3*, 8.6*, 10, 12, 13.3*, 15, 16.7*, 17.1, 20 cpi
Lines Per Inch	1.5, 2, 3, 4, 5, 6, 8, 9, 10 & 12 (plus variable line spacing)
Fonts	Draft, Data processing, Courier, Gothic, OCR A & B (ANSI & DIN)
Character Styles	Bold, italic, superscript, subscript, underline, overline, and strikethrough
Graphics Resolution	Maximum: 240 x 288 (H x V)
Graphics Compatibility	Tally Industrial Graphics; QMS® CODE V™ Version 2; Printronix® PGL
Bar Codes	Code 39, Code 128, Interleaved 2 of 5, UPC-A, UPC-E, EAN 8, EAN 13, EAN 128, Codabar, Identicon 2 of 5, MSI, POSTNET
Control Panel	Alphanumeric display (six languages) provides complete access to printer operation, configuration, calibration and test features. Includes lockout feature.
Paper Handling	Straight paper path. Two adjustable pull tractors provide low profile design, with easy paper loading from the front. Paper motion detection and alarm. Paper out detection and alarm. Forms position retained in nonvolatile storage. Quick Forms Access models with easy top access to forms and labels (no paper motion detection).
Print Media	Up to 6-part forms, forms thickness maximum .025", weight: 15 – 100 lb. stock
Paper Sizes	Width: 4" – 16", forms length: 1 – 255 lines
Paper Advance	Slew Speed: 16 inches per second (max.)
Standard Interface	Serial RS-232 (up to 38.4K Baud) and IEEE-1284 compliant Centronics Parallel are both standard (hot I/Os with active port selected automatically).
Standard Emulations	Tally MT660, Printronix® P600 and P6000, HP 2564C, DEC® LG01, Epson® FX1180, Genicom® ANSI & IBM® Proprinter III XL
Ribbon	Easy-load, clean-hands cartridge, fabric-25, 50 & 150 million characters
Physical (H x W x D)	Tabletop: 12.7" x 31.5" x 23.1", 79 lbs.; Tabletop on Stand: 39.4" x 31.5" x 28.7", 99 lbs. Enclosed Cabinet: 38.6" x 31.5" x 33.4", 123 lbs.
Power Requirements	90 - 130/180 - 260 V, 57 - 63/47 - 53 Hz (auto-ranging); Consumption: 150 Watts average
Environmental	Temperature range: 10°C to 40°C (operating); -20°C to 60°C (non-operating) Humidity: 10% to 90% non-condensing (operating); 5% to 95% non-condensing (non-operating)
Optional Interfaces	FourPlex I/O: Twinax, Coax, Serial and Parallel, IPDS for FourPlex LANPlex I/O: Ethernet (10BaseT/100BaseT), Serial and Parallel, IPDS for LANPlex Extended Parallel I/O: Dataproducts Standard, Dataproducts Long Lines FourPlex and LANPlex also available as factory configured models

*Available in Enhanced Font Mode

Tally Printer Outlet

1-866-430-6202

Tally®
Computer Printers



T6050 Enclosed Pedestal



T6050 with Pedestal



BSEN ISO 9001:1994
Certificate No. FM 28149



9/02. Specifications subject to change without further notice, all product and brand names are trademarks of the respective companies.
Copyright © 2002, Tally Printer Corporation

Tally Printer Outlet.Com
1-866-430-6202

Fax for a Quick Quote
817-430-6250

Choose Model:

T6050

Organization _____

Name _____

Phone (_____) _____ Fax Number (_____) _____

E-Mail _____

Address _____

City _____ State _____ Zip _____

Please indicate your specifications or requirements:

Additional Comments:

